

TMV3 thermostatic mixer tap

Product details

Warranty:	5 years
Max load:	N/A
Doc M compliant:	Yes
Suitable for wet areas:	Yes
Max Inlet Temp:	85°C
Factory Set Temp:	43°C
Max Operating Pressure:	10 BAR Static
Min Inlet Pressure:	0.2 BAR Dynamic

Features

- Large area handle, easy operate
- Reg 4 Certified (WRAS, NSF, Kiwa, etc.)
- TMV3 Approved
- Safe touch body
- Self-draining spout
- Complies with Part M of the Building Regulations
- Easy operation for users with limited dexterity
- System Installation: Unvented, Pressurised, Gravity & Combination
- 4 L/min Flow Regulator (TAPTMOVFT4L/CP)
- Spout aerator/limiter can be swapped out for further water saving (not supplied by FOL)

Finish options


CP
Polished Chrome

Product description

TMV3 thermostatic mixer tap, copper tails, 7LPM, polished chrome

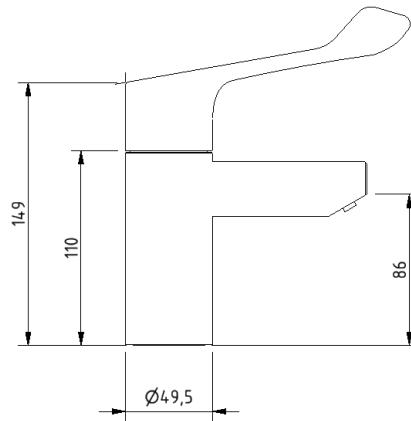
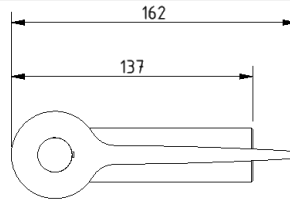
TMV3 thermostatic mixer tap, 400mm G1/2" flexi tails, 4LPM, polished chrome

Product code

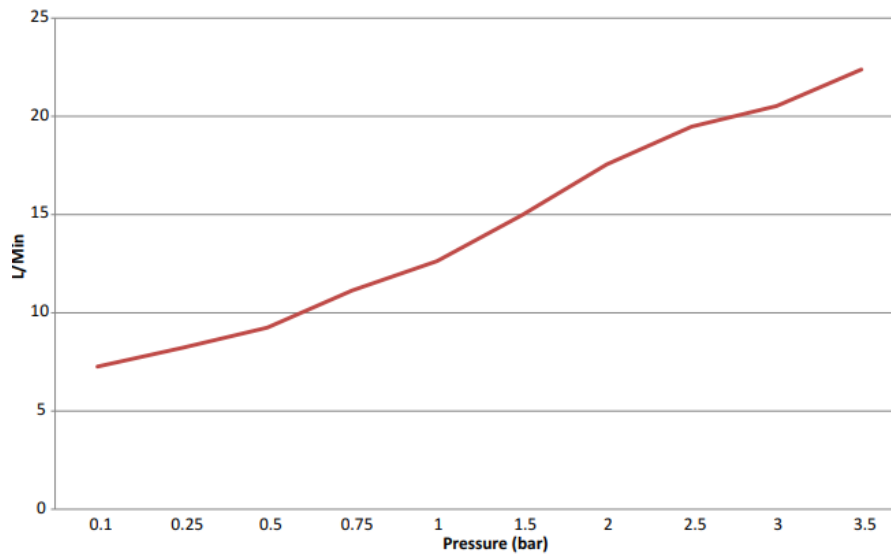
TAPTMOV/CP

TAPTMOVFT4L/CP

Dimensions (mm)



FLOW RATE FOR TAPTMV



Pressure	0.2	0.5	1	1.5	2	2.5	3	4
Flow Rate (ltrs/min)	3.6	3.8	3.9	4.1	4	3.9	4.1	4

Fitzroy of London may occasionally need to change specification of products and/or kit contents and reserves the right to do so. We strive to keep our documentation up to date; however, we cannot guarantee this. We accept no liability for any information given on this data sheet.

FLOW RATE GRAPH FOR TAPTMVFT4L/CP

Mixed Water Temperature = 41°C

