



# UltraFast Cubicles



## Overview

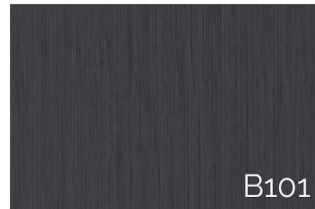
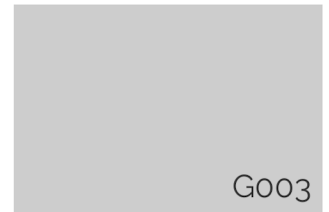
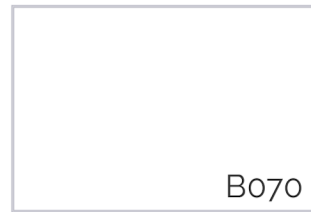
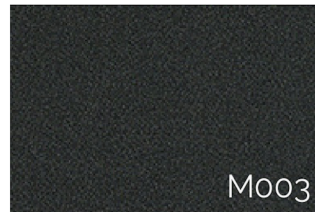
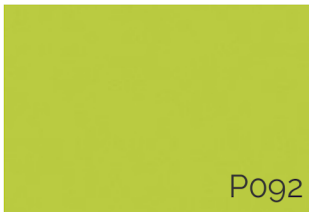
- ✓ Quick delivery - Usually dispatched within 48 hours
- ✓ Full installation guide for easy on-site assembly
- ✓ Heavy duty cubicle legs, locks, and hinges
- ✓ Durable & robust Solid Grade Laminate board
- ✓ Suitable for wet environments

## Specification

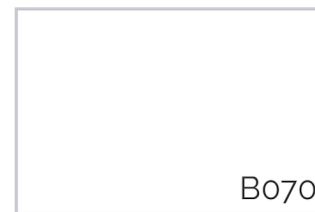
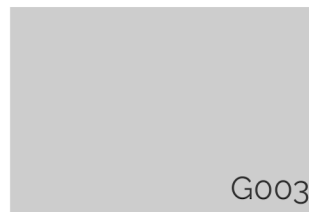
Product Code	UltraFast
Partition Depth	Supplied at 1850mm
Overall Height	2000mm
Fittings	Satin Anodised Aluminium
Material	Solid Grade Laminate

## Standard Colours

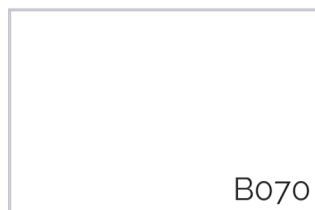
### Doors



### Partitions

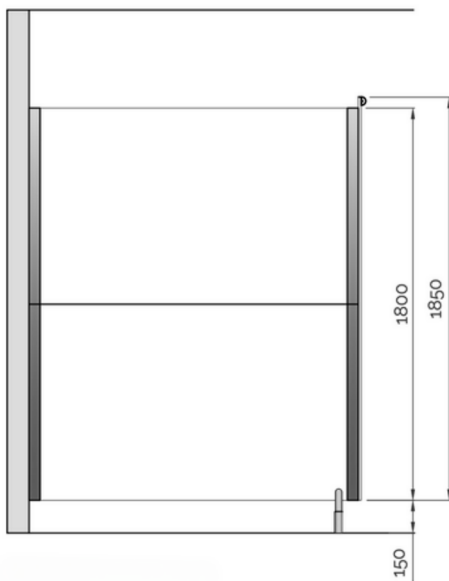


### Pilasters

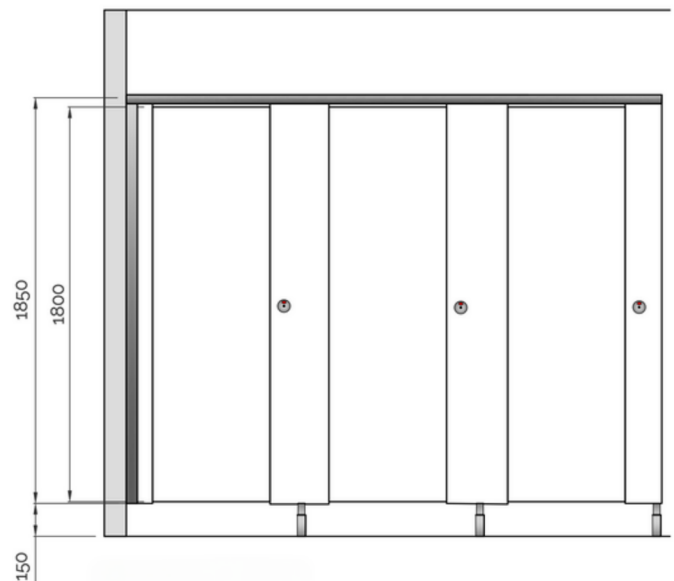


# Standard Dimensions

## Side Elevation



## Front Elevation



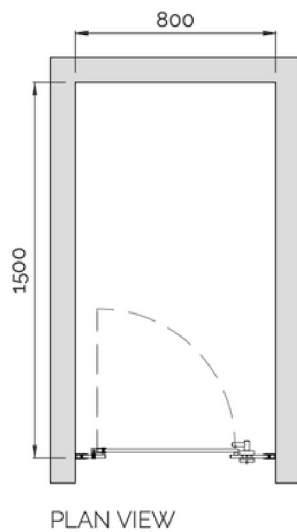
Overall Height	2000mm	Floor Clearance	150mm
Partition Height	1800mm	Partition Depth	max 1850mm
Door Height	1800mm	Door Width	max 700mm
End Pilasters	1850mm	Pilaster Width	115mm - 400mm

The UltraFast Range can be cut and finished on-site to suit specific room dimensions.

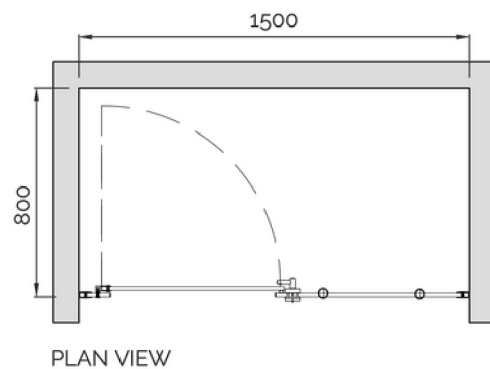
Doors, pilasters, and partitions can be trimmed with cut edges hidden inside wall and door hinge channels.

# Typical Configurations

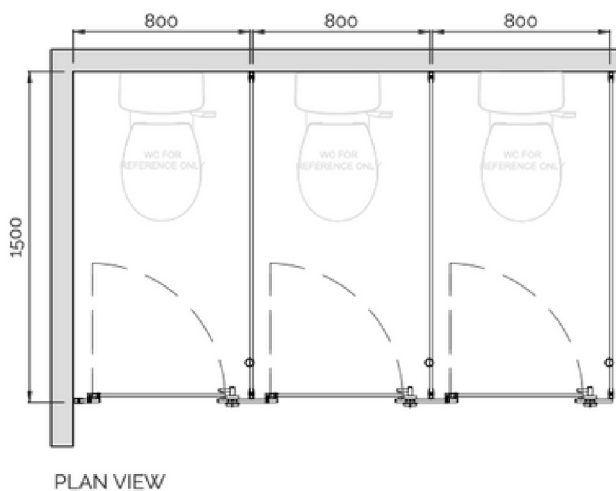
## Door Assembly



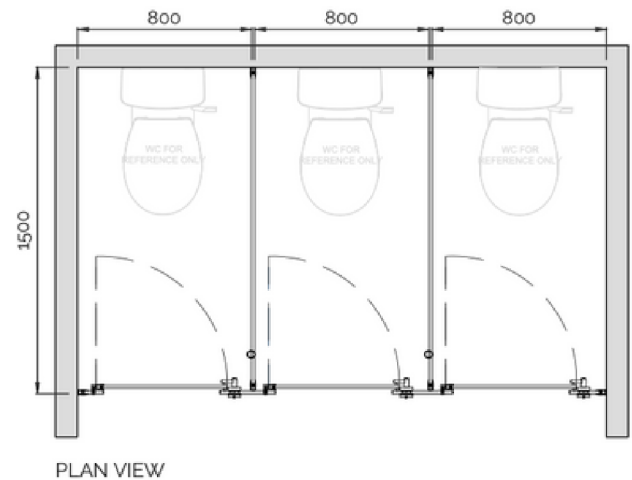
## In-line Cubicle



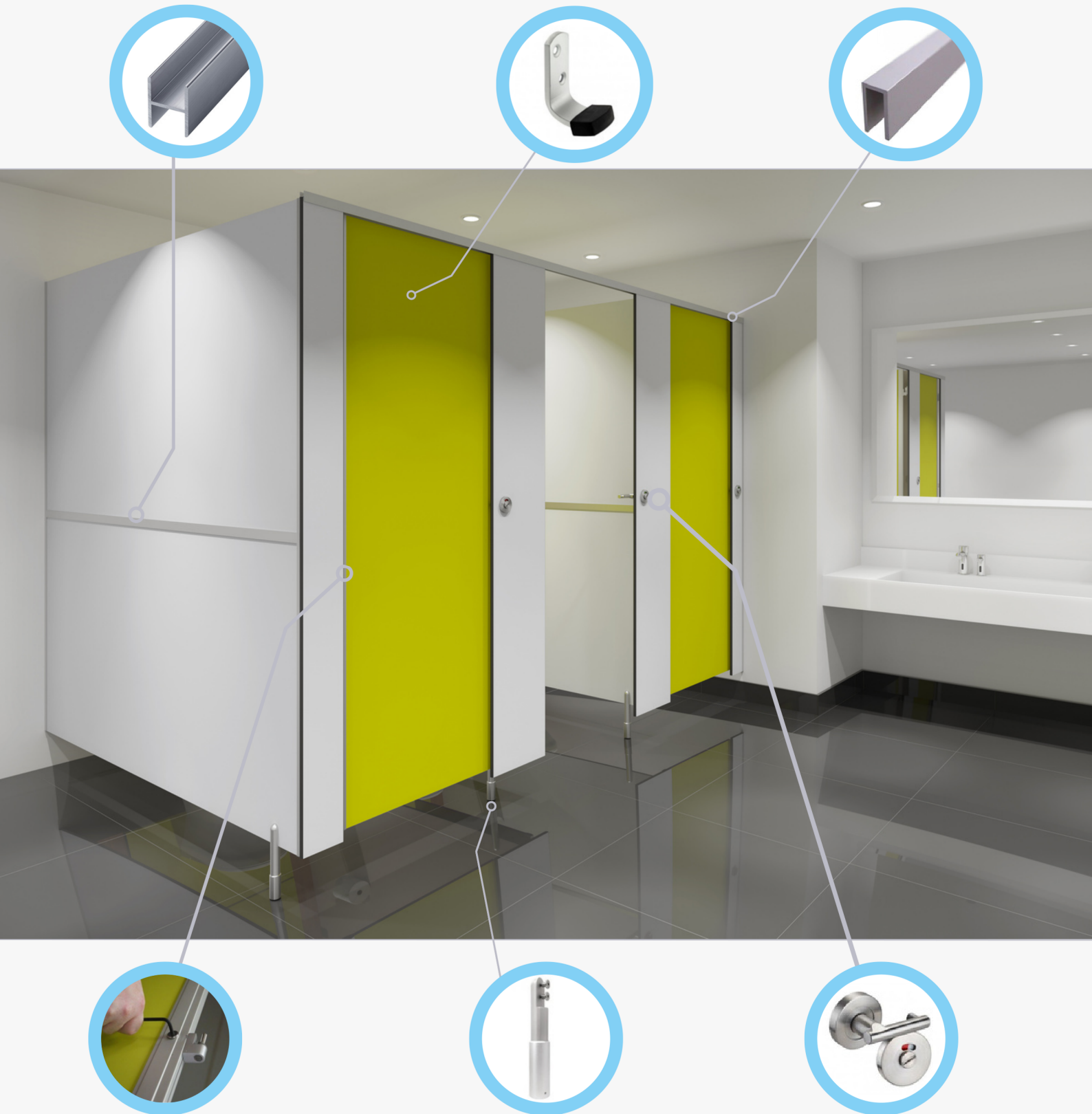
## In a Corner



## Between Walls



# Hardware & Fittings



\*E&OE. Document subject to change without notice. Refer to manufacturing drawings for sizes, colours, and dimensions.