

## Doc M Low Level WC Pack

### Introduction

The Inta Doc M WC packs complies with the approved Document M of the Building Regulations and BS8300:2009. The Inta Doc M WC packs provides both left and right hand layouts without the need to specify right or left hand assemblies\*

\*NOTE. The drawing on page 3 illustrates a left hand layout, for right hand layouts this must be reversed.



- Complies with document M of the Building Regulations and BS8300:2009
- Lantac approved pack
- Close coupled and Low level packs available
- TMV3 approved packs available
- Operating pressure range of 0.1 to 5 bar
- Available with white or blue rails

### Product Range

Description	Finish	Code No.
Doc M 6Ltr low level WC pack with white rails	White	DM600WH
Doc M 6Ltr low level WC pack with blue rails	Blue	DM600BL
* Doc M 6Ltr low level WC pack with white rails & TMV3 approved Basin Tap	White	DMX600WH
* Doc M 6Ltr low level WC pack with blue rails & TMV3 approved Basin Tap	Blue	DMX600BL
* Doc M 6Ltr low level WC pack with white rails & TMV3 approved Mixing valve	White	DM600WH3
* Doc M 6Ltr low level WC pack with blue rails & TMV3 approved Mixing valve	Blue	DM600BL3

\* Note: TMV3 approval applies to these packs only



## Doc M Low Level WC Pack

### ■ Pack Contents

#### ■ WC SUITE

Low Level HO Pan

6ltr Close Coupled Cistern & Spatula Lever

Seat Ring and Hinges

#### ■ BASIN

450mm Basin - 2 Tap Holes

1 1/4" Basin Waste

Lever Operated Sequential Basin Mixer Tap

Bottle Trap

Wall Fixing Brackets

Tap hole stopper

#### ■ RAILS

600mm Support Rails (x 5)

Hinged Support Rail with Toilet Roll Holder (x 1)

#### ■ ADDITIONAL MANDATORY ITEMS NOT INCLUDED

Alarm Pull Cord With Two Red Bangles, Shelf & Facility for Limb Storage

Mirror 400mm wide x 1000mm high fixed at a height of 800mm from the floor to the bottom edge

#### ■ FIXING

It is essential that fixing instructions be followed, as the security of all items is vitally important. Walls onto which fittings are to be mounted must be suitable for the intended use of the applicable product. Appropriate fixings should be used which are suitable for the material of the fixing wall. For specialist fixings advise contact Fisher Fixings to ensure the correct fixings are used.

#### ■ WC

Plugged and screwed to the floor (fixings not supplied)

#### ■ Cistern

Wall Brackets plugged and screwed to the wall (fixings not supplied)

#### ■ Basin

Mounted on brackets provided using suitable fixings (fixings not provided)

#### ■ Basin Mixer Tap

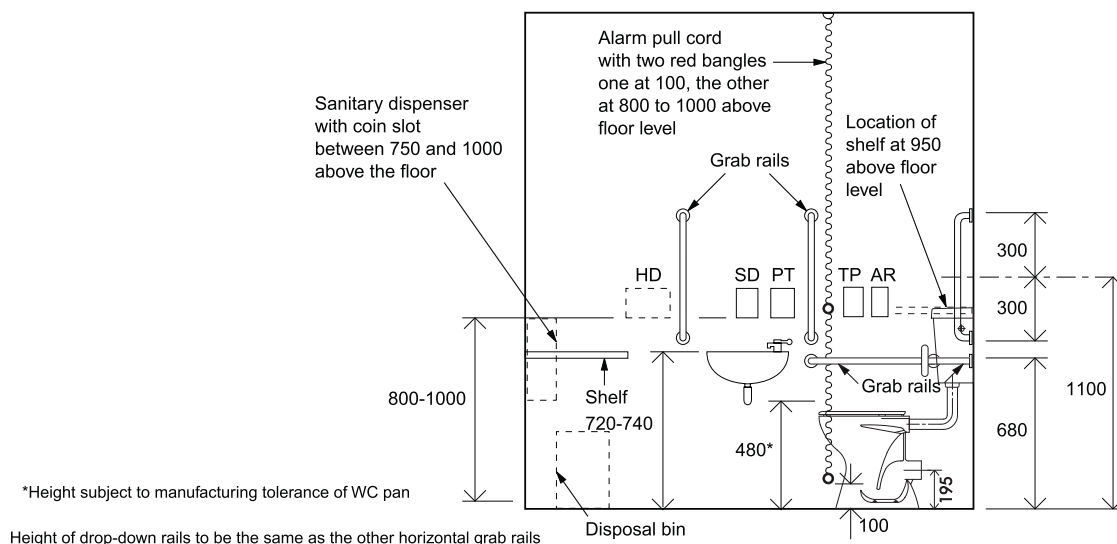
Lever operated Basin Mixer tap

Intatherm Thermostatic Basin Mixer Tap TMV3 (DMX600WH & DMX600BL only)

#### ■ Thermostatic Mixing Valve

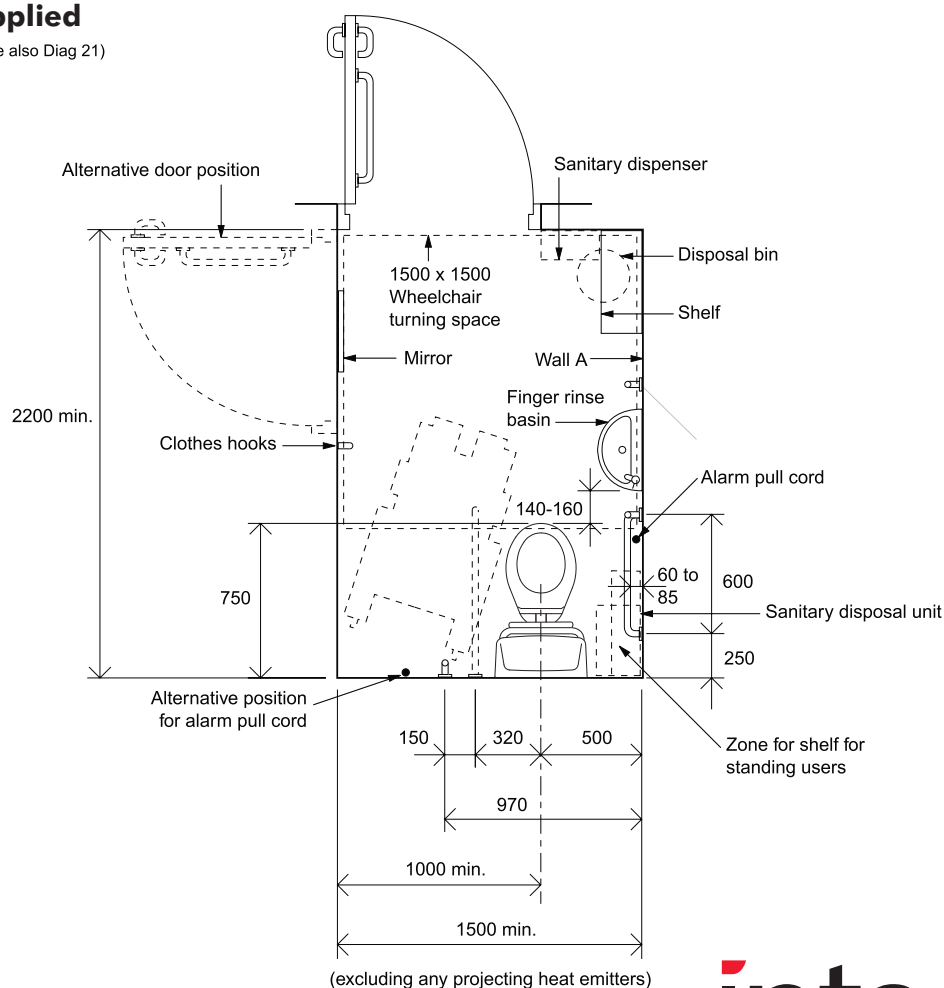
Intamix TMV3 approved 15mm Thermostatic Mixing Valve (DM600WH3 & DM600BL3 only)





## Additional Items - Not Supplied

- HD: Possible position for automatic hand dryer (see also Diag 21)
- SD: Soap dispenser
- PT: Paper towel dispenser
- AR: Alarm reset button
- TP: Toilet paper dispenser



Note  
Layout for right hand transfer to WC

inta

Intatec limited, Airfield Industrial Estate, Hixon, Stafford, ST18 0PF

T. 01889 272180

F. 01889 272181

E. sales@intatec.co.uk

www.intatec.co.uk | www.antiscald.co.uk